



# MASTER LEDtube InstantFit HF T5

## Master LEDtube HF 1200mm HO 26W 865 T5

Philips MASTER LEDtube InstantFit T5 integrates a LED light source into a traditional fluorescent form factor. Its unique design creates a perfectly uniform visual appearance which cannot be distinguished from traditional fluorescent. The Philips MASTER LEDtube InstantFit T5 is the ideal solution for customers who have higher light output requirements and want to maximize value over lifetime. Full energy savings & longer lifetime result in attractive payback times and TCO benefits.

### Product data

General Information		Power (Rated) (Nom)	
Cap-Base	G5 [ G5]		26 W
EU RoHS compliant	Yes	Lamp Current (Max)	700 mA
Nominal Lifetime (Nom)	50000 h	Lamp Current (Min)	450 mA
Switching Cycle	50000X	Starting Time (Nom)	0.5 s
		Warm Up Time to 60% Light (Nom)	0.5 s
Light Technical		Power Factor (Nom)	0.9
Color Code	865 [ CCT of 6500K]	Voltage (Nom)	50-60 V
Beam Angle (Nom)	160 °	Temperature	
Luminous Flux (Nom)	3900 lm	T-Ambient (Max)	45 °C
Color Designation	Cool Daylight	T-Ambient (Min)	-20 °C
Correlated Color Temperature (Nom)	6500 K	T-Storage (Max)	65 °C
Luminous Efficacy (rated) (Nom)	150.00 lm/W	T-Storage (Min)	-40 °C
Color Consistency	<6	T-Case Maximum (Nom)	45 °C
Color Rendering Index (Nom)	83	Controls and Dimming	
LLMF At End Of Nominal Lifetime (Nom)	70 %	Dimmable	No
Operating and Electrical			
Input Frequency	35000-80000 Hz		

# MASTER LEDtube InstantFit HF T5

## Mechanical and Housing

Bulb Material	Plastic
Product Length	1200 mm

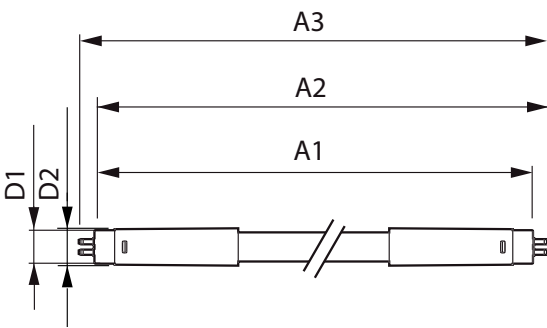
## Approval and Application

Energy Efficiency Label (EEL)	A++
Energy Saving Product	Yes
Approval Marks	RoHS compliance TUV CE marking KEMA Keur certificate
Energy Consumption kWh/1000 h	31 kWh

## Product Data

Full product code	871869670531500
Order product name	Master LEDtube HF 1200mm HO 26W 865 T5
EAN/UPC - Product	8718696705315
Order code	929001338502
Numerator - Quantity Per Pack	1
Numerator - Packs per outer box	10
Material Nr. (12NC)	929001338502
Net Weight (Piece)	0.155 kg

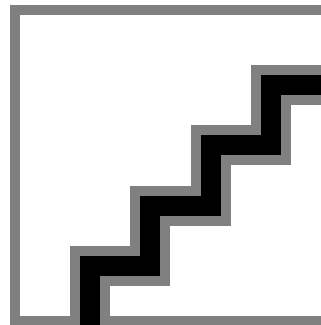
## Dimensional drawing



TLED 1200mm 26-49W 3900lm 6500K G5 ND

Product	D1	D2	A1	A2	A3
Master LEDtube HF 1200mm HO 26W 865 T5	15.2 mm	21 mm	1147.8 mm	1154.9 mm	1162 mm

## Photometric data



LEDtubes, TLED T12 120-277V 20W 6500K G13

LEDtube 1200mm 26W G5 865 3900lm

# MASTER LEDtube InstantFit HF T5

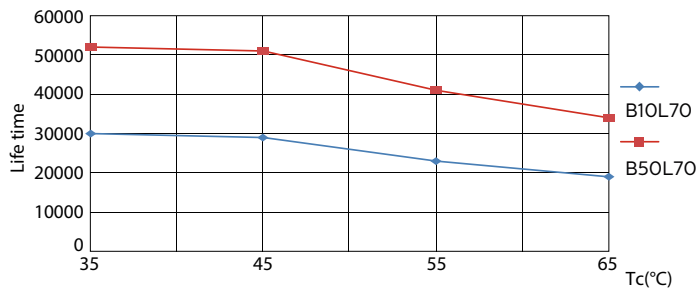
## Photometric data



LEDtube 1200mm 26W G5

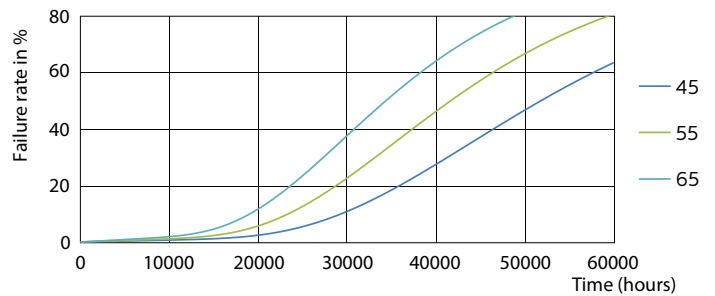
## Lifetime

LEDtube 1200mm 26W G5 3900lm



LEDtube 1200mm 26W G5 3900lm

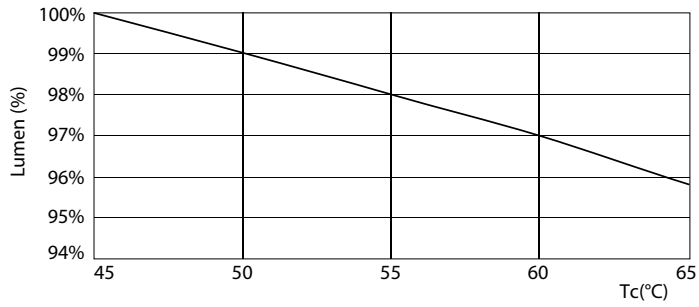
LEDtube 1200mm 26W G5 3900lm



LEDtube 1200mm 26W G5 3900lm

# MASTER LEDtube InstantFit HF T5

## Lifetime



LEDtube 1200mm 26W G5 3900lm

