



UniFlood C

BVP322 18LED 27K 220V 30

UniFlood C is a circular shaped, exterior-rated and cost-effective architectural LED floodlight that is designed for façade, landscape and outdoor flood lighting applications. The robust mechanical design and high-efficiency optical design make it ideal for illuminating multi-story exterior facades, bridges, landmarks and monuments. Available in white, monochromatic colors, RGB, RGBW and tunable white. Six different spread lenses ranging from narrow spot to wide flood and DMX512/RDM control option available to give architects and designers the freedom to explore a wide range of concepts and design with no limitations.

Warnings and Safety

- For outdoor use only

Product data

| General Information | |
|-------------------------------|--|
| Light source color | Warm white |
| Light source replaceable | No |
| Number of gear units | 1 unit |
| Driver/power unit/transformer | PSU [Power supply unit] |
| Driver included | Yes |
| Optical cover/lens type | FG [Flat glass] |
| Luminaire light beam spread | 30° |
| Control interface | - |
| Connection | Flying leads/wires |
| Cable | Cable 0.5 m without plug 3-pole |
| Protection class IEC | Safety class I (I) |
| Flammability mark | F [For mounting on normally flammable surfaces] |
| CE mark | CE mark |
| Constant light output | No |

| Number of products on MCB of 16 A type B 6 | |
|--|--|
| Light source engine type | LED |
| Serviceability class | Class B, luminaire is equipped with some serviceable parts (when applicable): driver, control units, surge protection device, front cover and mechanical parts |
| Operating and Electrical | |
| Input Voltage | 220 to 240 V |
| Input Frequency | 50 to 60 Hz |
| Inrush current | 40 A |
| Inrush time | 0.45 ms |
| Power Factor (Min) | 0.9 |

UniFlood C

Controls and Dimming

| | |
|----------|----|
| Dimmable | No |
|----------|----|

Mechanical and Housing

| | |
|-----------------------------|------------------------------------|
| Housing Material | Aluminum die-cast |
| Optic material | Polymethyl methacrylate |
| Optical cover/lens material | Tempered glass |
| Fixation material | Steel |
| Mounting device | MBA [Mounting bracket adjustable] |
| Optical cover/lens shape | Flat |
| Optical cover/lens finish | Clear |
| Overall length | 258 mm |
| Overall width | 210 mm |
| Overall height | 157 mm |
| Overall diameter | 210 mm |
| Color | Dark gray |

Approval and Application

| | |
|------------------------------|---|
| Ingress protection code | IP66 [Dust penetration-protected, jet-proof] |
| Mech. impact protection code | IK08 [5 J vandal-protected] |

Initial Performance (IEC Compliant)

| | |
|-------------------------------------|---------|
| Initial luminous flux (system flux) | 1775 lm |
|-------------------------------------|---------|

| | |
|--------------------------------|----------|
| Luminous flux tolerance | +/-10% |
| Initial LED luminaire efficacy | 49 lm/W |
| Init. Corr. Color Temperature | 2700 K |
| Init. Color Rendering Index | 80 |
| Initial chromaticity | SDCM = 4 |
| Initial input power | 36 W |
| Power consumption tolerance | +/-10% |

Application Conditions

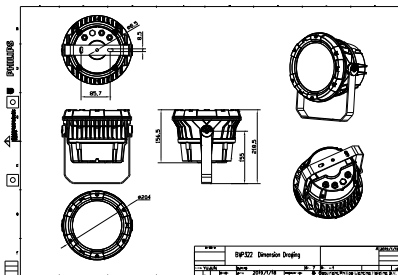
| | |
|---------------------------|---------------|
| Ambient temperature range | -40 to +50 °C |
|---------------------------|---------------|

Product Data

| | |
|---------------------------------|--------------------------|
| Full product code | 911401739842 |
| Order product name | BVP322 18LED 27K 220V 30 |
| Order code | 911401739842 |
| Numerator - Quantity Per Pack | 1 |
| Numerator - Packs per outer box | 2 |
| Material Nr. (12NC) | 911401739842 |
| Net Weight (Piece) | 4.099 kg |



Dimensional drawing



BVP321/322/323/324

