



CorePro LED PLC 2P

LED PLC 7.5W 865 2P G24d

CorePro LED PLC 2P integrates a LED light source into a traditional fluorescent form factor. This product is the ideal solution for uplamping in general lighting applications: it meets basic lighting requirements, offers significant energy savings, and is environmentally friendly.

Product data

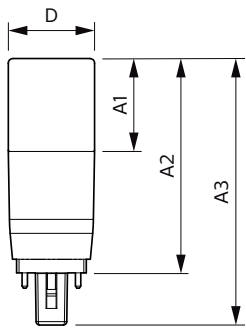
General information		Starting Time (Nom)		0.5 s
Cap-Base	G24D [G24d]	Warm Up Time to 60% Light (Nom)	0.5 s	
EU RoHS compliant	Yes	Power Factor (Nom)	0.5	
Nominal Lifetime (Nom)	15000 h	Voltage (Nom)	220-240 V	
Switching Cycle	50000	Temperature		
Light technical		T-Ambient (Max)	45 °C	
Color Code	865 [CCT of 6500K]	T-Ambient (Min)	-20 °C	
Beam Angle (Nom)	240 °	T-Storage (Range)	-40 °C to 65 °C	
Luminous Flux (Nom)	806 lm	T-Storage (Max)	65 °C	
Color Designation	Cool Daylight	T-Storage (Min)	-40 °C	
Correlated Color Temperature (Nom)	6500 K	T-Case Maximum (Nom)	64 °C	
Luminous Efficacy (rated) (Nom)	107.00 lm/W	Controls and dimming		
Color Consistency	<6	Dimmable	No	
Color Rendering Index (Nom)	80	Mechanical and housing		
LLMF At End Of Nominal Lifetime (Nom)	70 %	Product Length	100 mm	
Operating and electrical		Bulb Shape	PL-C	
Input Frequency	50 to 60 Hz	Approval and application		
Power (Rated) (Nom)	7.5 W	Energy Saving Product	Yes	
Lamp Current (Max)	57 mA			
Lamp Current (Min)	57 mA			
Lamp Current (Nom)	57 mA			

CorePro LED PLC 2P

Approval Marks	RoHS compliance CE marking KEMA Keur certificate
Energy Consumption kWh/1000 h	- kWh
Application conditions	
Ambient temperature range	-20 °C to 45 °C
Product data	
Full product code	871869681020000

Order product name	LED PLC 7.5W 865 2P G24d
EAN/UPC - Product	8718696810200
Order code	929001879108
Numerator - Quantity Per Pack	1
Numerator - Packs per outer box	10
Material Nr. (12NC)	929001879108
Net Weight (Piece)	0.030 kg

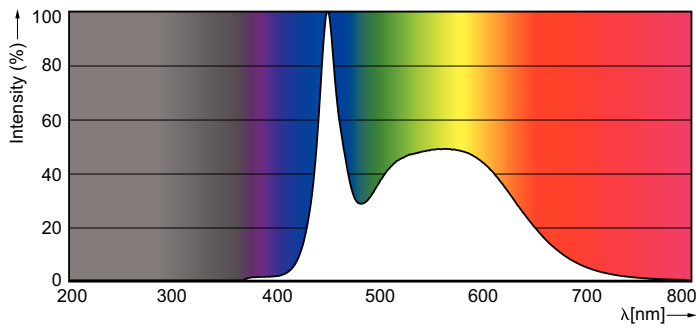
Dimensional drawing



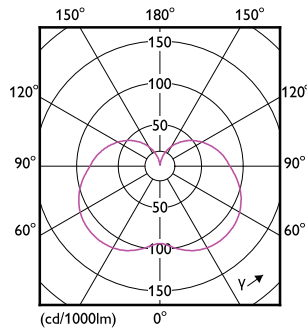
LED PLC 7.5W 865 2P G24d

Product	D	A1	A2	A3
LED PLC 7.5W 865 2P G24d	37.2 mm	40 mm	92.5 mm	115 mm

Photometric data



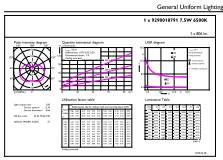
CorePro LEDtube 1500mm 20W G13 865



LEDtube PLC 7.5W G24D 830 2P 24D ND

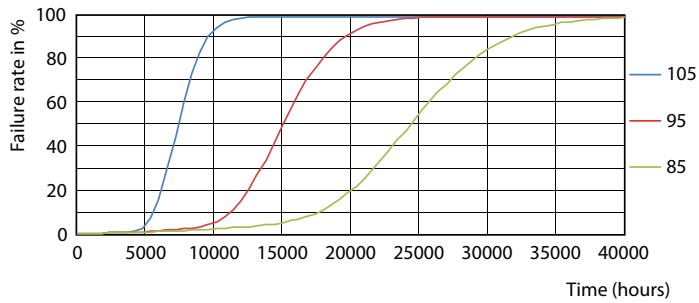
CorePro LED PLC 2P

Photometric data

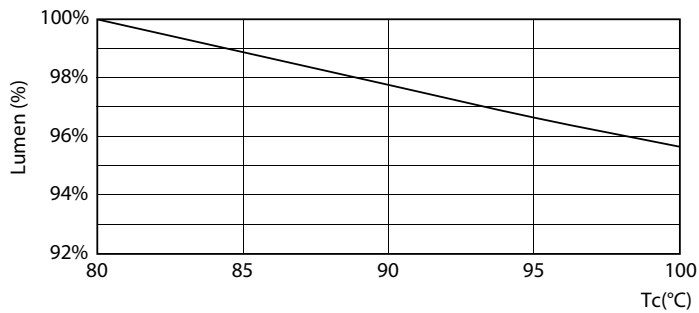


LEDtube PLC 7.5W G24D 865 2P 24D ND

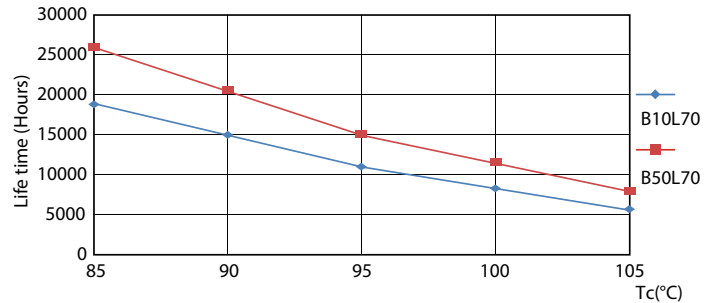
Lifetime



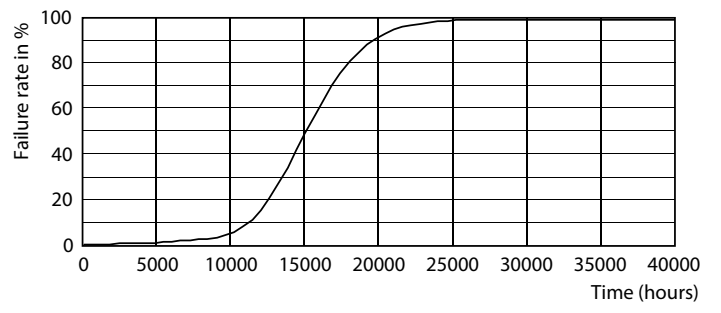
LEDtube PLC 7.5W G24D 830 2P 24D ND



LEDtube PLC 7.5W G24D 830 2P 24D ND



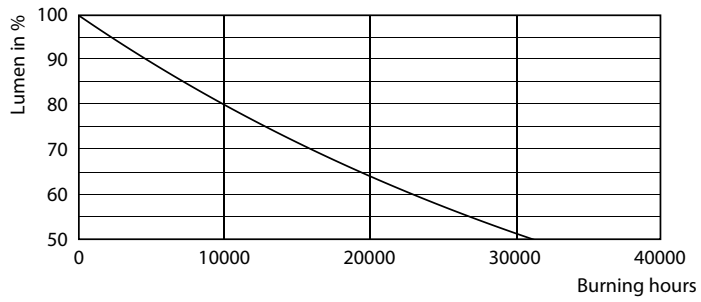
LEDtube PLC 7.5W G24D 830 2P 24D ND



LEDtube PLC 7.5W G24D 830 2P 24D ND

CorePro LED PLC 2P

Lifetime



LEDtube PLC 7.5W G24D 830 2P 24D ND

