



UniString

BWS302 8LED 27K 24V A DMX LR N10P20

UniString - 112 lm - 2 W - 2700 K

UniString is a surface mounted, exterior-rated and compact sized architectural LED direct view string that is designed for architectural and media façade outdoor lighting applications. The robust mechanical design, easy installation and unique optical lenses make UniString ideal for buildings/media facades, bridges, arenas, theaters, amusement parks and recreational centers. Available in white, monochromatic colors, RGB, RGBW and tunable white. Available in symmetrical and asymmetrical optical distributions with DMX control option to give architects and designers the freedom to explore a wide range of concepts and design with no limitations.

Warnings and Safety

- For outdoor use only

Product data

General Information	
Light source color	Warm white
Light source replaceable	No
Driver included	No
Optical cover/lens type	PCC [Polycarbonate bowl/cover clear]
Luminaire light beam spread	85° x 110°
Control interface	Dynamix DMX
Connection	Push-in connector 5-pole (PI)
Cable	2 meters long cable with 10 nodes, 200mm pitch and 2 connectors 5-pole
Protection class IEC	Safety class III (III)
Glow-wire test	Temperature 750 °C, duration 30 s
Flammability mark	F [For mounting on normally flammable surfaces]

CE mark	CE mark
Operating and Electrical	
Input Voltage	24 DC V
Input Frequency	- Hz
Power Factor (Min)	0.9
Controls and Dimming	
Dimmable	Yes
Mechanical and Housing	
Housing Material	Polycarbonate
Optical cover/lens material	Polycarbonate

UniString

Overall length	48 mm
Overall width	15.5 mm
Overall height	60.1 mm
Color	Black

Approval and Application

Ingress protection code	IP66 [Dust penetration-protected, jet-proof]
Mech. impact protection code	IK06 [1 J]

Initial Performance (IEC Compliant)

Initial luminous flux (system flux)	112 lm
Luminous flux tolerance	+/-10%
Initial LED luminaire efficacy	56 lm/W
Init. Corr. Color Temperature	2700 K
Init. Color Rendering Index	80
Initial chromaticity	4 SDCM
Initial input power	2 W

Power consumption tolerance	+/-10%
-----------------------------	--------

Application Conditions

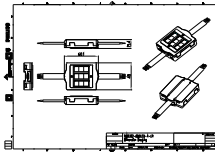
Ambient temperature range	-40 to +50 °C
Maximum dim level	5% (1 to 10 V)

Product Data

Full product code	911401754022
Order product name	BWS302 8LED 27K 24V A DMX LR N10P20
Order code	911401754022
Numerator - Quantity Per Pack	1
Numerator - Packs per outer box	120
Material Nr. (12NC)	911401754022
Net Weight (Piece)	0.070 kg



Dimensional drawing



BWS220 SmartBright LED

