



# UniString

## BWS302 9LED RGB 24V S DMX N10P20

UniString - 31 lm - 2 W - - K

UniString is a surface mounted, exterior-rated and compact sized architectural LED direct view string that is designed for architectural and media façade outdoor lighting applications.;The robust mechanical design, easy installation and unique optical lenses make UniString ideal for buildings/media facades, bridges, arenas, theaters, amusement parks and recreational centers.;Available in white, monochromatic colors, RGB, RGBW and tunable white.;Available in symmetrical and asymmetrical optical distributions with DMX control option to give architects and designers the freedom to explore a wide range of concepts and design with no limitations.

### Warnings and Safety

- For outdoor use only

### Product data

General Information	
Light source color	Red, green and blue
Light source replaceable	No
Driver included	No
Optical cover/lens type	PCC [ Polycarbonate bowl/cover clear]
Luminaire light beam spread	110° x 110°
Control interface	Dynamix DMX
Connection	Push-in connector 5-pole (PI)
Cable	2 meters long cable with 10 nodes, 200mm pitch and 2 connectors 5-pole
Protection class IEC	Safety class III (III)
Glow-wire test	Temperature 750 °C, duration 30 s
Flammability mark	F [ For mounting on normally flammable surfaces]

CE mark	CE mark
Operating and Electrical	
Input Voltage	24 DC V
Input Frequency	- Hz
Power Factor (Min)	0.9
Controls and Dimming	
Dimmable	Yes
Mechanical and Housing	
Housing Material	Polycarbonate
Optical cover/lens material	Polycarbonate

# UniString

Overall length	48 mm
Overall width	15.5 mm
Overall height	60.1 mm
Color	Black

## Approval and Application

Ingress protection code	IP66 [ Dust penetration-protected, jet-proof]
Mech. impact protection code	IK06 [ 1 J]

## Initial Performance (IEC Compliant)

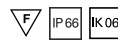
Initial luminous flux (system flux)	31 lm
Luminous flux tolerance	+/-10%
Initial LED luminaire efficacy	16 lm/W
Init. Corr. Color Temperature	- K
Init. Color Rendering Index	-
Initial input power	2 W
Power consumption tolerance	+/-10%

## Application Conditions

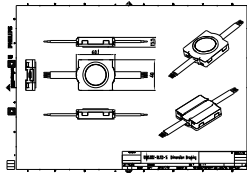
Ambient temperature range	-40 to +50 °C
Maximum dim level	5% (1 to 10 V)

## Product Data

Full product code	911401753962
Order product name	BWS302 9LED RGB 24V S DMX N10P20
Order code	911401753962
Numerator - Quantity Per Pack	1
Numerator - Packs per outer box	120
Material Nr. (12NC)	911401753962
Net Weight (Piece)	0.070 kg



## Dimensional drawing



## BWS220 SmartBright LED

