



UniString

BWS301 6LED RGBW 15V S DMX TM N16P12

UniString - 40 lm - 1.2 W - - K

UniString is a surface mounted, exterior-rated and compact sized architectural LED direct view string that is designed for architectural and media façade outdoor lighting applications.;The robust mechanical design, easy installation and unique optical lenses make UniString ideal for buildings/media facades, bridges, arenas, theaters, amusement parks and recreational centers.;Available in white, monochromatic colors, RGB, RGBW and tunable white.;Available in symmetrical and asymmetrical optical distributions with DMX control option to give architects and designers the freedom to explore a wide range of concepts and design with no limitations.

Warnings and Safety

- For outdoor use only

Product data

General Information	
Light source color	Red, green, blue and white
Light source replaceable	No
Driver included	No
Optical cover/lens type	PCC [Polycarbonate bowl/cover clear]
Luminaire light beam spread	110° x 110°
Control interface	Dynamix DMX
Connection	Push-in connector 5-pole (PI)
Cable	2 meters long cable with 16 nodes, 125mm pitch and 2 connectors 5-pole
Protection class IEC	Safety class III (III)
Glow-wire test	Temperature 750 °C, duration 30 s
Flammability mark	F [For mounting on normally flammable surfaces]

CE mark	CE mark
Operating and Electrical	
Input Voltage	15 DC V
Input Frequency	- Hz
Power Factor (Min)	0.9
Controls and Dimming	
Dimmable	Yes
Mechanical and Housing	
Housing Material	Polycarbonate
Optical cover/lens material	Polycarbonate

UniString

Overall length	47 mm
Overall width	15.5 mm
Overall height	57 mm
Color	Black

Approval and Application

Ingress protection code	IP66 [Dust penetration-protected, jet-proof]
Mech. impact protection code	IK06 [1 J]

Initial Performance (IEC Compliant)

Initial luminous flux (system flux)	40 lm
Luminous flux tolerance	+/-10%
Initial LED luminaire efficacy	33 lm/W
Init. Corr. Color Temperature	- K
Init. Color Rendering Index	-
Initial input power	1.2 W
Power consumption tolerance	+/-10%

Application Conditions

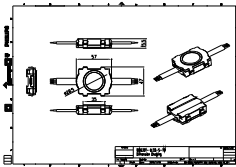
Ambient temperature range	-40 to +50 °C
Maximum dim level	5% (1 to 10 V)

Product Data

Full product code	911401753512
Order product name	BWS301 6LED RGBNW 15V S DMX TM N16P12
Order code	911401753512
Numerator - Quantity Per Pack	1
Numerator - Packs per outer box	192
Material Nr. (12NC)	911401753512
Net Weight (Piece)	0.046 kg



Dimensional drawing



BWS220 SmartBright LED

