



# UniDot G2

## BGS301 G2 30LEDLP RGBNW 24V CFC DMX

UniDot G2 - 214 lm - 6 W - - K

UniDot G2 is a surface mounted, exterior-rated and compact sized architectural LED direct view dot lighting luminaire that is designed for façade and outdoor lighting applications. The robust mechanical and unique optical covers make UniDot G2 ideal for building facades, bridges, theaters, amusement parks and recreational centers. Available in white, monochromatic colors, RGB, RGBW and tunable white. Three optical covers options and DMX control interface available to give architects and designers the freedom to explore a wide range of concepts and design with no limitations.

### Product data

General Information		Serviceability class	
Light source color	Red, green, blue, amber and white	Serviceability class	Class B, luminaire is equipped with some serviceable parts (when applicable): driver, control units, surge protection device, front cover and mechanical parts
Light source replaceable	No	<b>Light Technical</b>	
Driver/power unit/transformer	PSU-E [ Power supply unit external (PSU)]	Standard tilt angle posttop	-
Driver included	No	Standard tilt angle side entry	-
Optical cover/lens type	Polycarbonate bowl/cover flat	<b>Operating and Electrical</b>	
Luminaire light beam spread	110°	Input Voltage	24 DC V
Control interface	Dynamix DMX	Input Frequency	- Hz
Connection	2 Push-in connector 5-pole	Power Factor (Min)	0.9
Cable	2 cables 0.3m with connector 5-pole	<b>Controls and Dimming</b>	
Protection class IEC	Safety class III (III)	Dimmable	Yes
Flammability mark	F [ For mounting on normally flammable surfaces]		
CE mark	CE mark		
Light source engine type	LED		

## UniDot G2

### Mechanical and Housing

Housing Material	Aluminum die-cast
Optical cover/lens material	Polycarbonate
Mounting device	No [-]
Optical cover/lens shape	Flat
Optical cover/lens finish	Clear
Overall length	111 mm
Overall width	100 mm
Overall height	37 mm
Overall diameter	100 mm
Color	Dark gray

### Approval and Application

Ingress protection code	IP66 [ Dust penetration-protected, jet-proof]
Mech. impact protection code	IK06 [ 1 J]

### Initial Performance (IEC Compliant)

Initial luminous flux (system flux)	214 lm
Luminous flux tolerance	+/-10%
Initial LED luminaire efficacy	36 lm/W

Init. Corr. Color Temperature	- K
Init. Color Rendering Index	-
Initial input power	6 W
Power consumption tolerance	+/-10%

### Application Conditions

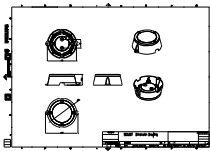
Ambient temperature range	-40 to +50 °C
Maximum dim level	1%

### Product Data

Full product code	911401752652
Order product name	BGS301 G2 30LEDLP RGBNW 24V CFC DMX
Order code	911401752652
Numerator - Quantity Per Pack	1
Numerator - Packs per outer box	24
Material Nr. (12NC)	911401752652
Net Weight (Piece)	0.270 kg



## Dimensional drawing



BGS301/302 UNI Dot

