



# UniDot G2

## BGS301 G2 30LEDLP RGB 24V OSC DMX

UniDot G2 - 125 lm - 6 W - - K

UniDot G2 is a surface mounted, exterior-rated and compact sized architectural LED direct view dot lighting luminaire that is designed for façade and outdoor lighting applications. The robust mechanical and unique optical covers make UniDot G2 ideal for building facades, bridges, theaters, amusement parks and recreational centers. Available in white, monochromatic colors, RGB, RGBW and tunable white. Three optical covers options and DMX control interface available to give architects and designers the freedom to explore a wide range of concepts and design with no limitations.

### Product data

| General Information           |  | Serviceability class            |  |
|-------------------------------|--|---------------------------------|--|
| Light source color            | Red, green and blue                              | Serviceability class            | Class B, luminaire is equipped with some serviceable parts (when applicable): driver, control units, surge protection device, front cover and mechanical parts |
| Light source replaceable      | No   | <b>Light Technical</b>          |  |
| Driver/power unit/transformer | PSU-E [ Power supply unit external (PSU)]        | Standard tilt angle posttop     | -  |
| Driver included               | No   | Standard tilt angle side entry  | -  |
| Optical cover/lens type       | Polycarbonate bowl/cover spherical               | <b>Operating and Electrical</b> |  |
| Luminaire light beam spread   | 150°   | Input Voltage                   | 24 DC V  |
| Control interface             | Dynamix DMX                                      | Input Frequency                 | - Hz   |
| Connection                    | 2 Push-in connector 5-pole                       | Power Factor (Min)              | 0.9  |
| Cable                         | 2 cables 0.3m with connector 5-pole              | <b>Controls and Dimming</b>     |  |
| Protection class IEC          | Safety class III (III)                           | Dimmable                        | Yes  |
| Flammability mark             | F [ For mounting on normally flammable surfaces] |                                 |  |
| CE mark                       | CE mark  |                                 |  |
| Light source engine type      | LED  |                                 |  |

# UniDot G2

## Mechanical and Housing

|                             |                   |
|-----------------------------|-------------------|
| Housing Material            | Aluminum die-cast |
| Optical cover/lens material | Polycarbonate     |
| Mounting device             | No [-]            |
| Optical cover/lens shape    | Hemispherical     |
| Optical cover/lens finish   | Opal              |
| Overall length              | 111 mm            |
| Overall width               | 100 mm            |
| Overall height              | 67 mm             |
| Overall diameter            | 100 mm            |
| Color                       | Dark gray         |

## Approval and Application

|                              |   |
|------------------------------|---|
| Ingress protection code      | IP66 [ Dust penetration-protected, jet-proof] |
| Mech. impact protection code | IK06 [ 1 J]                                   |

## Initial Performance (IEC Compliant)

|                                     |         |
|-------------------------------------|---------|
| Initial luminous flux (system flux) | 125 lm  |
| Luminous flux tolerance             | +/-10%  |
| Initial LED luminaire efficacy      | 21 lm/W |

|                               |        |
|-------------------------------|--------|
| Init. Corr. Color Temperature | - K    |
| Init. Color Rendering Index   | -      |
| Initial input power           | 6 W    |
| Power consumption tolerance   | +/-10% |

## Application Conditions

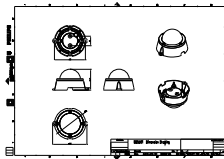
|                           |               |
|---------------------------|---------------|
| Ambient temperature range | -40 to +50 °C |
| Maximum dim level         | 1%            |

## Product Data

|                                 |                                   |
|---------------------------------|-----------------------------------|
| Full product code               | 911401752632                      |
| Order product name              | BGS301 G2 30LEDLP RGB 24V OSC DMX |
| Order code                      | 911401752632                      |
| Numerator - Quantity Per Pack   | 1                                 |
| Numerator - Packs per outer box | 24                                |
| Material Nr. (12NC)             | 911401752632                      |
| Net Weight (Piece)              | 0.270 kg                          |



## Dimensional drawing



BGS301/302 UNI Dot

