



# UniDot G2

## BGS301 G2 30LEDLP 40K 24V OSC

UniDot G2 - 322 lm - 6 W - 4000 K

UniDot G2 is a surface mounted, exterior-rated and compact sized architectural LED direct view dot lighting luminaire that is designed for façade and outdoor lighting applications. The robust mechanical and unique optical covers make UniDot G2 ideal for building facades, bridges, theaters, amusement parks and recreational centers. Available in white, monochromatic colors, RGB, RGBW and tunable white. Three optical covers options and DMX control interface available to give architects and designers the freedom to explore a wide range of concepts and design with no limitations.

### Product data

General Information		Serviceability class	
Light source color	Neutral white	Class B, luminaire is equipped with some serviceable parts (when applicable): driver, control units, surge protection device, front cover and mechanical parts	
Light source replaceable	No	Light Technical	
Driver/power unit/transformer	PSU-E [ Power supply unit external (PSU)]	Standard tilt angle posttop	-
Driver included	No	Standard tilt angle side entry	-
Optical cover/lens type	Polycarbonate bowl/cover spherical	Operating and Electrical	
Luminaire light beam spread	150°	Input Voltage	24 DC V
Control interface	-	Input Frequency	- Hz
Connection	2 Push-in connector 2-pole	Power Factor (Min)	0.9
Cable	2 cables 0.3m with connector 2-pole	Controls and Dimming	
Protection class IEC	Safety class III (III)	Dimmable	No
Flammability mark	F [ For mounting on normally flammable surfaces]		
CE mark	CE mark		
Light source engine type	LED		

# UniDot G2

## Mechanical and Housing

Housing Material	Aluminum die-cast
Optical cover/lens material	Polycarbonate
Mounting device	No [-]
Optical cover/lens shape	Hemispherical
Optical cover/lens finish	Opal
Overall length	111 mm
Overall width	100 mm
Overall height	67 mm
Overall diameter	100 mm
Color	Dark gray

## Approval and Application

Ingress protection code	IP66 [ Dust penetration-protected, jet-proof]
Mech. impact protection code	IK06 [ 1 J]

## Initial Performance (IEC Compliant)

Initial luminous flux (system flux)	322 lm
Luminous flux tolerance	+/-10%
Initial LED luminaire efficacy	54 lm/W

Init. Corr. Color Temperature	4000 K
Init. Color Rendering Index	80
Initial chromaticity	4 SDCM
Initial input power	6 W
Power consumption tolerance	+/-10%

## Application Conditions

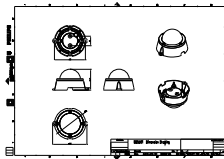
Ambient temperature range	-40 to +50 °C
---------------------------	---------------

## Product Data

Full product code	911401752582
Order product name	BGS301 G2 30LEDLP 40K 24V OSC
Order code	911401752582
Numerator - Quantity Per Pack	1
Numerator - Packs per outer box	24
Material Nr. (12NC)	911401752582
Net Weight (Piece)	0.270 kg



## Dimensional drawing



BGS301/302 UNI Dot

