



UniDot G2

BGS300 G2 12LEDLP RGBNW 24V OSC DMX

UniDot G2 - 94 lm - 3 W - - K

UniDot G2 is a surface mounted, exterior-rated and compact sized architectural LED direct view dot lighting luminaire that is designed for façade and outdoor lighting applications. The robust mechanical and unique optical covers make UniDot G2 ideal for building facades, bridges, theaters, amusement parks and recreational centers. Available in white, monochromatic colors, RGB, RGBW and tunable white. Three optical covers options and DMX control interface available to give architects and designers the freedom to explore a wide range of concepts and design with no limitations.

Product data

General Information		Serviceability class	
Light source color	Red, green, blue, amber and white	Class B, luminaire is equipped with some serviceable parts (when applicable): driver, control units, surge protection device, front cover and mechanical parts	
Light source replaceable	No		
Driver/power unit/transformer	PSU-E [Power supply unit external (PSU)]		
Driver included	No		
Optical cover/lens type	Polycarbonate bowl/cover spherical		
Luminaire light beam spread	130°		
Control interface	Dynamix DMX		
Connection	2 Push-in connector 5-pole		
Cable	2 cables 0.3m with connector 5-pole		
Protection class IEC	Safety class III (III)		
Flammability mark	F [For mounting on normally flammable surfaces]		
CE mark	CE mark		
Light source engine type	LED		
		Light Technical	
		Standard tilt angle posttop	-
		Standard tilt angle side entry	-
		Operating and Electrical	
		Input Voltage	24 DC V
		Input Frequency	- Hz
		Power Factor (Min)	0.9
		Controls and Dimming	
		Dimmable	Yes

UniDot G2

Mechanical and Housing

Housing Material	Aluminum die-cast
Optical cover/lens material	Polycarbonate
Mounting device	No [-]
Optical cover/lens shape	Hemispherical
Optical cover/lens finish	Opal
Overall length	78 mm
Overall width	72 mm
Overall height	57 mm
Overall diameter	72 mm
Color	Dark gray

Approval and Application

Ingress protection code	IP66 [Dust penetration-protected, jet-proof]
Mech. impact protection code	IK06 [1 J]

Initial Performance (IEC Compliant)

Initial luminous flux (system flux)	94 lm
Luminous flux tolerance	+/-10%
Initial LED luminaire efficacy	31 lm/W

Init. Corr. Color Temperature	- K
Init. Color Rendering Index	-
Initial input power	3 W
Power consumption tolerance	+/-10%

Application Conditions

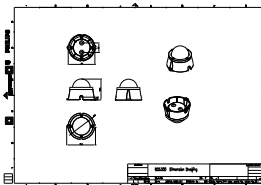
Ambient temperature range	-40 to +50 °C
Maximum dim level	1%

Product Data

Full product code	911401752422
Order product name	BGS300 G2 12LEDLP RGBNW 24V OSC DMX
Order code	911401752422
Numerator - Quantity Per Pack	1
Numerator - Packs per outer box	48
Material Nr. (12NC)	911401752422
Net Weight (Piece)	0.212 kg



Dimensional drawing



BGS301/302 UNI Dot

